



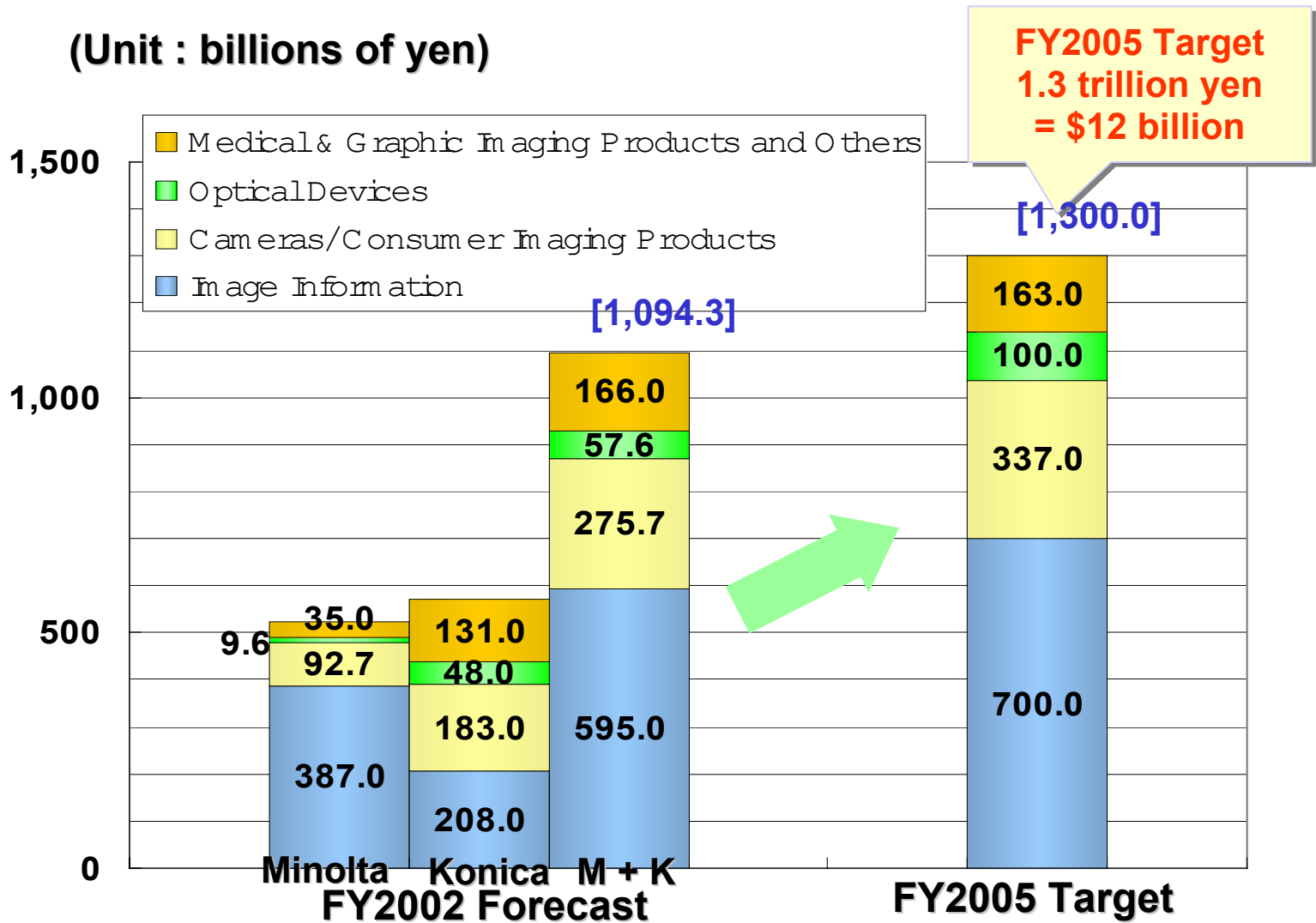
Konica Minolta IJ Head for Industrial Applications

**Konica Minolta Technology Center Inc.,
IJT R&D Center
Katsuaki KOMATSU
Business Development Center
Akiyoshi OHNO
February 6,2004**

Contents

- Introduction : Konica Minolta ... Who ?
- Head Family
- Non-Aqueous Model : Common Feature
- Non-Aqueous Model
 - Large Drop : Single-pass capable
 - Small Drop : Fine Image Quality
 - ***New!* GRAY SCALE !**
- Gray Scale Technology
- Assisting Tool ***New!***

1. Konica + Minolta ... Who?



2. Head Family

Non-Aqueous Model

| Type | nozzle | dpi | ink | pl | KHz | built in Heater | | Application |
|------|--------|-----|------------------------|----|-----|-----------------|---------|------------------|
| | | | | | | with | without | |
| L | 512 | 360 | Oil Solvent UV Special | 42 | 7.6 | X | X | Single-pass |
| S | | | | 14 | 13 | (X) | X | Fine print image |

X available (X) coming soon

Aqueous Model

| Type | nozzle | dpi | ink | pl | KHz | | | Application |
|------|--------|-----|-------------------|----|-----|--|--|-------------|
| | 64 | | Aqueous (special) | 60 | | | | Textile |
| | 128 | | | 7 | | | | Special |
| | 256 | | | 18 | | | | Textile |
| | 512 | | | 4 | | | | Photo |

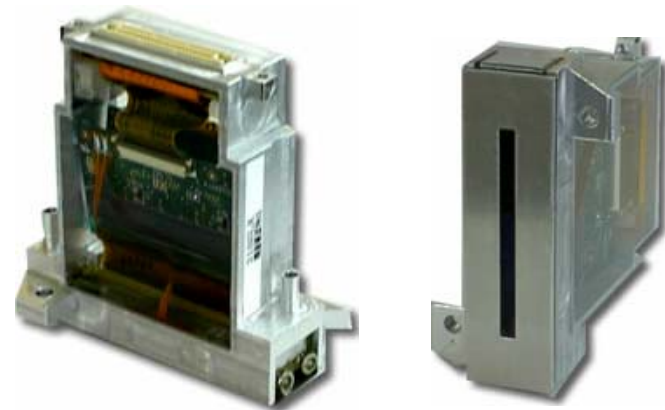
3. Non AQ : Common Feature

Non-Aqueous Model

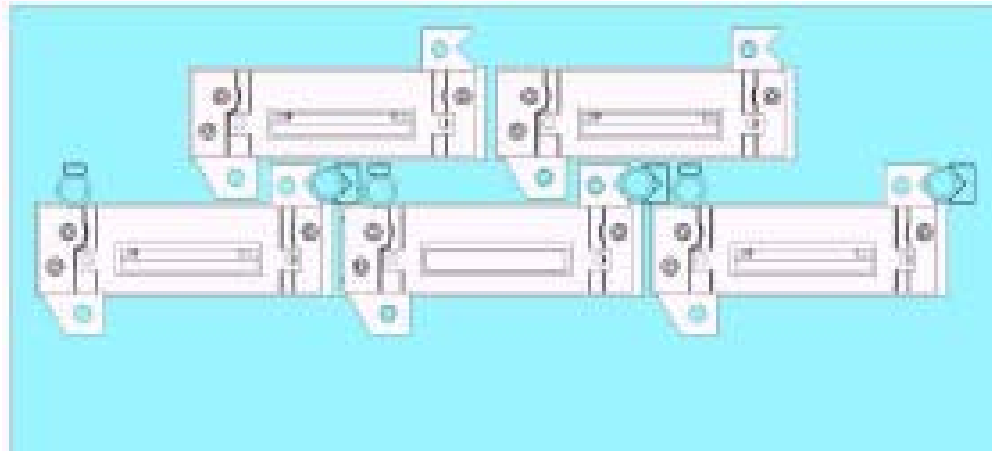
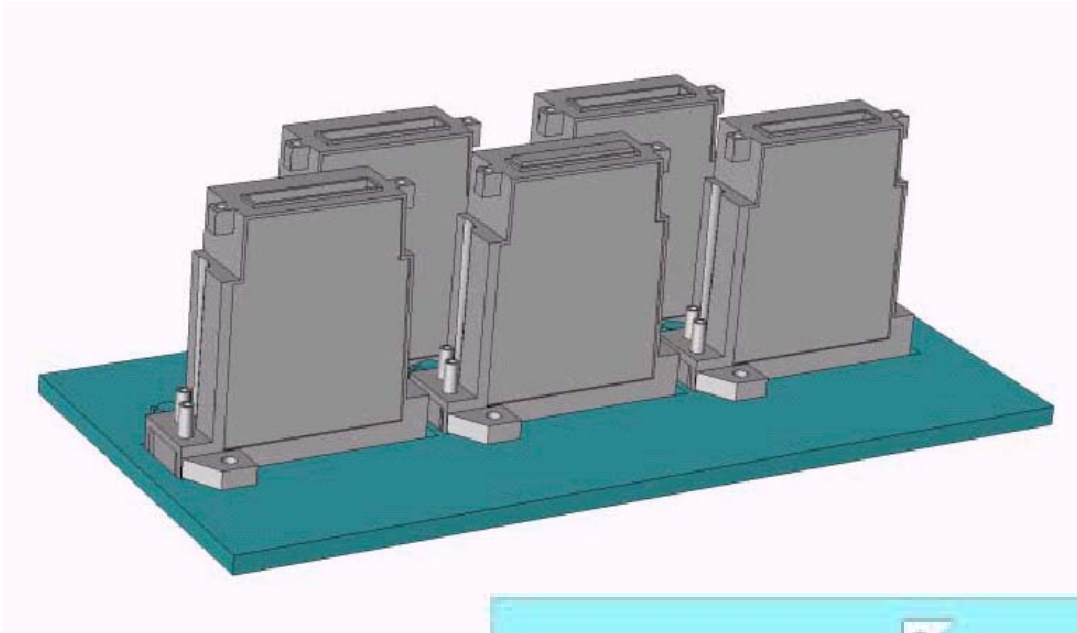
| Type | nozzle | dpi | ink | pl | KHz | built in Heater | | Application |
|----------|--------|-----|-------------|----|-----|-----------------|----------|------------------|
| | | | | | | with | without | |
| L | 512 | 360 | Oil Solvent | 42 | 7.6 | X | X | Single-pass |
| S | | | UV Special | 14 | 13 | (X) | X | Fine print image |

X available (X) coming soon

- Shear mode / 3 Cycle Operation
- 256 x 2 rows = 512 nozzle
- 180 x 2 rows = 360 native dpi
- Native 360 dpi (npi)
- Compact (85x67x20 mm)
- Light (ca.85 g)
- Same Design
- Easy to stitch
- Universal to ink type



3.1 Easy to Stitch

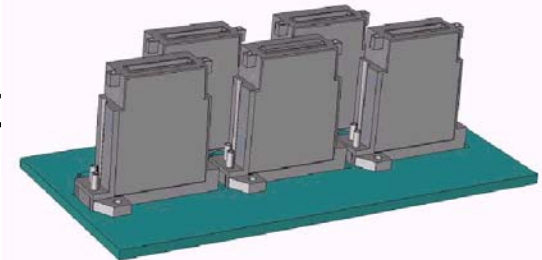


4.1 Type 512L_/LH

Non-Aqueous Model

| Type | nozzle | dpi | ink | pl | KHz | built in Heater | | Application |
|----------|--------|-----|------------------------------|----|------|-----------------|----------|------------------|
| | | | | | | with | without | |
| L | 512 | 360 | Oil Solvent UV Special | 42 | 7.6 | X | X | Single-pass |
| S | | | | 14 | 12.8 | (X) | X | Fine print image |

- Ideal for **Single-pass** print
 - Coding/Marking
 - Industrial
- (Outdoor) Signage



Single Pass



KONICA MINOLTA



Multi Color



KONICA MINOLTA



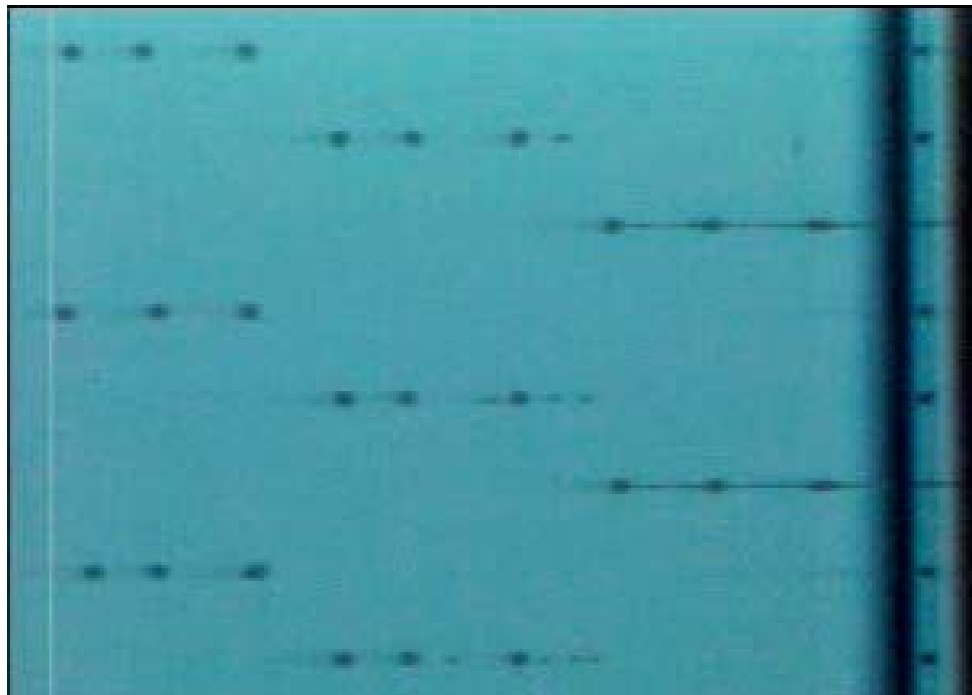
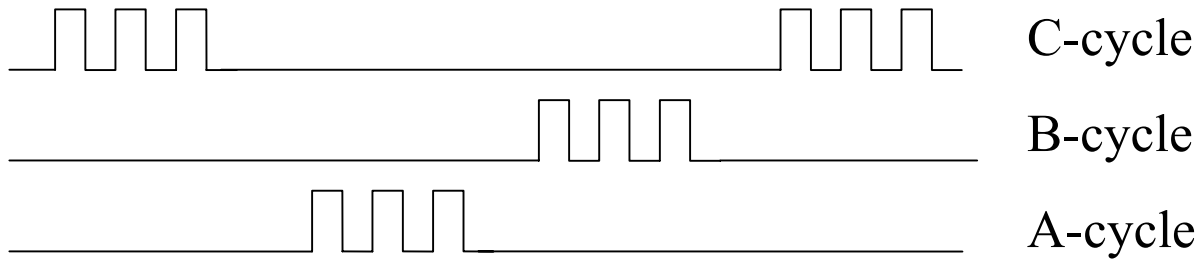
4.2 Type 512S_/SH

Non-Aqueous Model

| Type | nozzle | dpi | ink | pl | KHz | built in Heater | | Application |
|----------|--------|-----|---------------------------|----|------|-----------------|----------|------------------|
| | | | | | | with | without | |
| L | 512 | 360 | Oil Solvent UV Special | 42 | 7.6 | X | X | Single-pass |
| S | | | | 14 | 12.8 | (X) | X | Fine print image |

- Fine Image Quality (Smaller Drop Size)
- Higher Driving Frequency
- **3 Step Gray Scale (New!)**
 - *Good enough ? Yes !*
 - *Simple / Realistic*
 - *Still Single-pass possible*
- (Indoor) Signage
- Industrial - where small drop size required

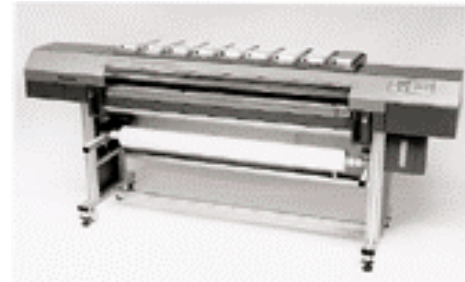
5. Gray Scale Technology



6. Assisting Tools

Family of Supporting Tools

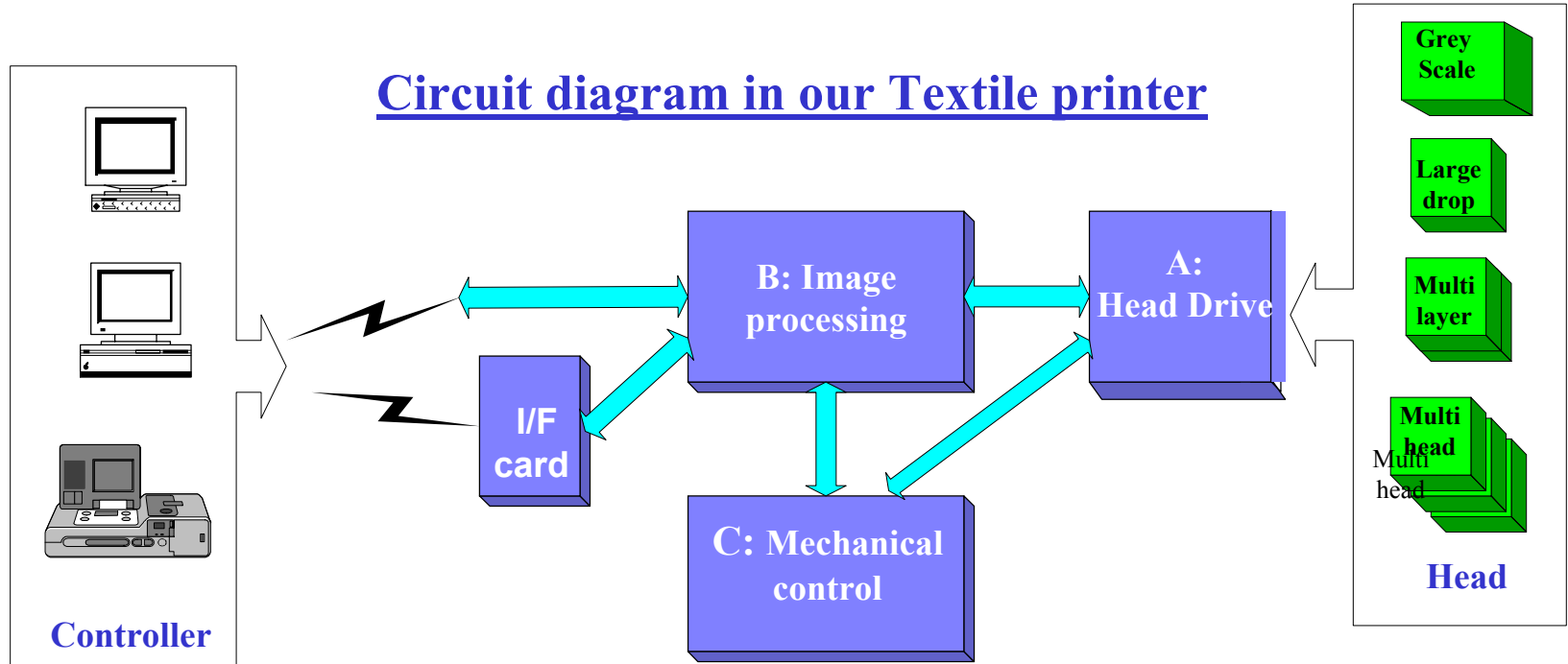
- Board for Simple Test : for Drop Observation
- Head Evaluation Kit : for print test or system development
- **Parts of Real Printer with Consultancy (New!)**



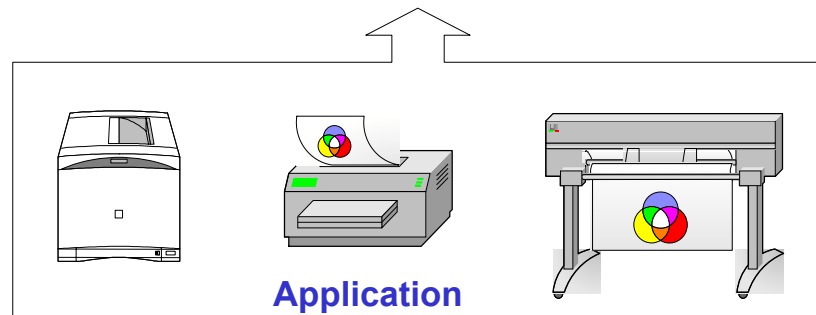


6.1 Block Diagram

Circuit diagram in our Textile printer



**Suitable for
all application,
all types of head**





6.2 Parts of Real Printer

A : Head Driving Board

- 3 cycle/1 cycle operation
- 8 heads connectible



B : Image Processing Board

- 2 kind of interface (USB/other)



C : Mechanical Control Board

- To be designed by Printer Integrator



Summary

- Simple Concept

Non-Aqueous Model

| Type | nozzle | dpi | ink | pl | KHz | built in Heater | | Application |
|------|--------|-----|-------------|----|-----|-----------------|---------|------------------|
| | | | | | | with | without | |
| L | 512 | 360 | Oil Solvent | 42 | 7.6 | X | X | Single-pass |
| S | | | UV Special | 14 | 13 | (X) | X | Fine print image |

X available (X) coming soon

- Gray Scale Available
- Assisting Tools



KonicaMinolta
512 nozzle Head
New Standard of
Industrial Inkjet